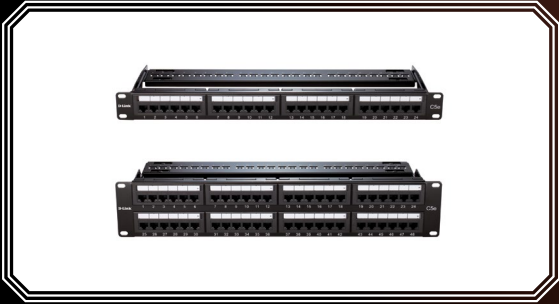


CAT5e UTP LOADED PATCH PANELS



KEY FEATURES

- Six-port RJ45 modules applied
- ID stripes for identifying port allocations
- IDC compatible with Krone tool
- Terminating 4 pairs, 22-26 AWG, unshielded cable
- Improved cable management with an optional cable management bar (Simple type, or "T" slot type)
- Universal labels Colour-coded for T568A and T568B wiring schemes

D-Link Category 5e patch panels are six port RJ45 modules applied and suitable for 22-26AWG stranded and solid wire, compatible with both 110 & Krone punch down tools. D-Link Cat5e patch panels have improved Cable Management with optional Cable Management bar terminating 4 pairs UTP cable. They are complied with the TIA/EIA-568-C.2 standard.

SPECIFICATIONS

I.D. Plate:	PVC, Transparent Color Paper
Panel:	SPCC. 1.5 mm thickness with Black (RAL 9005) Colour painted
RJ45 Jack:	Housing: ABS, UL94V-0 Contact Bracket: PC, UL 94V-2. Transparent Colour
RJ45 Jack Contact:	Material: Phosphor Bronze with Nickel plated Finish: 50 micro-inch Gold plated on Plug contact area
IDC:	Housing: PC+Glass Fiber, UL 94V-2 Terminal: Phosphor Bronze with Tin plated Jack Bracket Set: ABS, UL 94V-0
Support Bar:	SPCC, 1.5 mm thickness with Black (RAL 9005) Colour painted

ORDERING INFORMATION

PART CODE	DESCRIPTION
NPP-5E1BLK241	Cat5e UTP 24 Port Loaded Patch Panel
NPP-5E1BLK481	Cat5e UTP 48 Port Loaded Patch Panel